

Jacklyn A. Lo

---

# Hamlet's Last Choice

Description





## Genre

The interweaving of historical fiction, tragedy and thriller with elements of psychological drama, gothic literature, and political intrigue creates a rich tapestry that reimagines Shakespeare's timeless tale.

This novella delves deep into the human psyche, exploring themes of revenge, mortality, and the weight of choice against a backdrop of courtly machinations and supernatural undertones.

It challenges readers to reconsider the classic story through a new lens, questioning the nature of fate, free will, and the consequences of our choices.







## A short description

"Hamlet's Last Choice" is a gripping reimagining of Shakespeare's classic tragedy set in a medieval Denmark, where the line between the royal court and the pirate world blurs.

Prince Hamlet, haunted by grief and suspicion, seeks refuge aboard Captain Gus's ship, escaping the treacherous intrigues of his uncle, Claudius. Under the mentorship of the wise gravedigger Magnus, Hamlet grapples with the meaning of life and death, while navigating the dangerous waters of both - the sea and the court.

The story explores the collision of love and the search for justice with betrayal and murder, the devastating consequences of poisonous ambitions and hunger for political power, and the capacity of the Danish prince to make profound choices changing his inner self.

## Core Themes

**Revenge and Justice:** The novella (possibly novel) delves into the treacherous depths of Claudius's murder of his brother, exploring its cyclical nature and far-reaching consequences. Like a poison seeping through the Danish court, this act corrupts and transforms, challenging Hamlet to seek revenge and justice.

**Existentialism:** Characters grapple with the meaning of life, death, and free will, exploring the tension between individual choice and its consequences in shaping destiny.

**Love and Loss:** The poignant romance between Hamlet and Ophelia serves as a tender counterpoint to the darker themes, their love a fragile light amidst the encroaching shadows.

**Fate and Free Will:** Characters grapple with the invisible strings of destiny, their choices a constant battle between predetermined paths and the desire for autonomy.

**Power and Corruption:** The allure of the crown casts a long shadow over the court, revealing the insidious nature of Claudius's ambitions. As Elsinore's courtiers scheme and manipulate, the novella peels back the gilded layers of nobility to expose their rotting core.





## Secondary Themes

**Morality and Justice:** The complexities of seeking justice and the moral implications of revenge are explored.

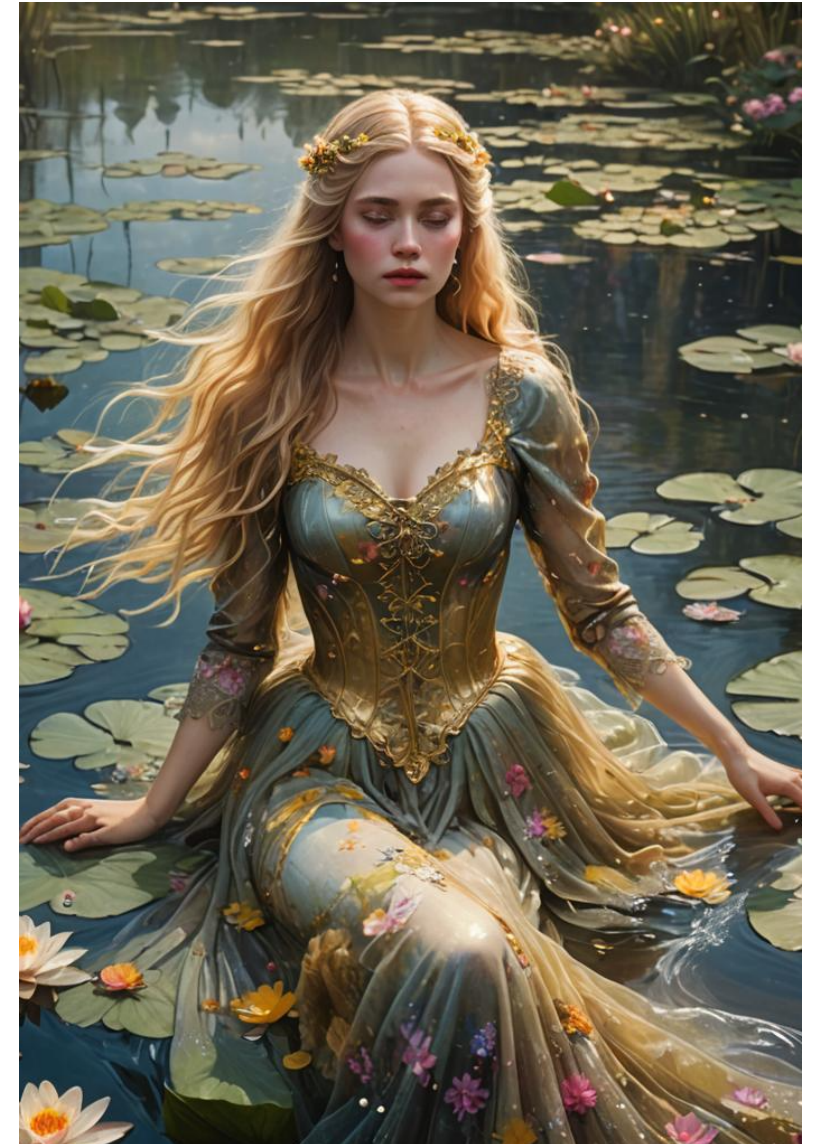
**Guilt and Redemption:** The characters' inner conflicts and desires for redemption highlight the psychological consequences of their actions.

**Perspective and Truth:** The subjective nature of truth and the importance of considering different perspectives are explored.

**Mental Health:** The portrayal of madness and its impact on individuals and their relationships is a significant theme.

**Family and Loyalty:** The bonds between characters and the complexities of loyalty are explored.

**Deception and Manipulation:** The characters' use of deception and manipulation to achieve their goals is a recurring theme.





## Plot

- Denmark, 1387 - Late Autumn
- King Hamlet dies; Claudius becomes king and marries Gertrude.
- On a bitterly cold night, Hamlet follows his father's ghost, who reveals Claudius's crime.
- Hamlet befriends Magnus, the gravedigger, who advises him to feign madness.
- Using a play, Hamlet confirms Claudius's guilt but hesitates to act.
- Hamlet accepts Claudius's proposal to travel to England, discovering a plot against his life.
- Pirates attack Hamlet's ship; he befriends Captain Gus but chooses to return to Denmark.
- Meanwhile, Ophelia struggles between her love for Hamlet and her father's pressure.
- Polonius dies suddenly during a dinner party, seemingly due to Ophelia's unintentional curse.
- Ophelia commits suicide, overcome by guilt and despair.
- Laertes leads a rebellion against Claudius.
- Hamlet returns, learns of the deaths, and confronts Claudius and Laertes.
- In a final duel, Hamlet, Claudius, Gertrude, and Laertes all perish.
- Fortinbras arrives, honoring Hamlet with a proper burial.





## Main Characters

- **Hamlet:** The prince of Denmark, who lost the throne after his father's untimely death
- **Ophelia:** Hamlet's sweetheart, who loves him deeply and hopes for a future together.
- **Claudius:** Hamlet's uncle, who murdered his father and married Gertrude
- **Gertrude:** Hamlet's mother, who has married Claudius after the death of King Hamlet
- **Polonius:** Ophelia's father and a counselor to Claudius.
- **Laertes:** Ophelia's brother





## Minor Characters

### Original:

- **Rosencrantz and Guildenstern** - childhood friends of Hamlet
- **Ghost:** The ghost of Hamlet's father, King Hamlet
- **Fortinbras:** The prince of Norway
- **Osric:** a Danish royal courter

### New:

- **Captain Gus** - a captain of a pirate ship, befriend of Hamlet
- **Magnus** - a life-wise Gravedigger, serves as Hamlet's unexpected mentor
- **Elara** - a loyal servant to Ophelia
- **Edward** - a new suitor for Ophelia

### Deleted:

- **Horatio**





## Writing Style

**Suspenseful and atmospheric:** The story creates a sense of dread and foreboding, building tension as the consequences of Nathan's actions become increasingly dire.

**Psychologically complex:** The characters grapple with deep-seated emotions and moral dilemmas, their inner struggles adding depth and nuance to the narrative.

**Thought-provoking and philosophical:** The story raises profound questions about the nature of life, death, faith, and science, prompting readers to reflect on their own beliefs and perspectives.

**Emotionally resonant:** The characters' struggles and triumphs evoke empathy and compassion in readers, making the story both engaging and thought-provoking.

**Intense and visceral:** The action sequences are graphic and disturbing, reflecting the monstrous nature of the resurrected Melissa.

**Scientifically grounded:** The descriptions of scientific concepts and experiments are accurate and engaging, adding realism to the story's premise.

**Religiously sensitive:** The story acknowledges and respects the characters' different religious beliefs, avoiding stereotypes or oversimplification.





**Jacklyn A. Lo**

---

**Thank You for Joining the Adventure!**



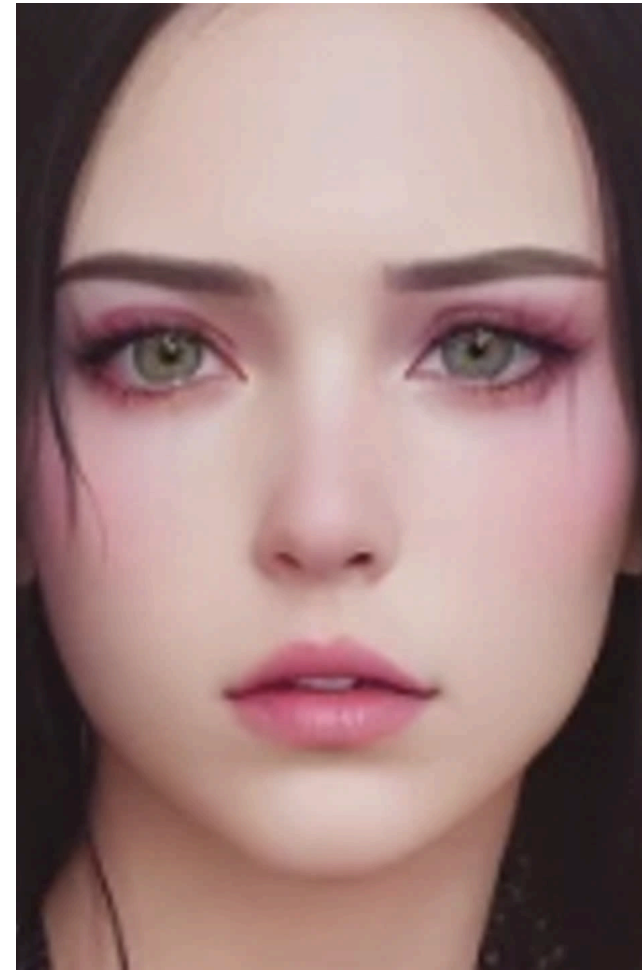


**Jacklyn A. Lo**

---

## About Author

Sci-fi author Jacklyn A. Lo tackles life's big questions in captivating tales like "Redemption" (a time-travel adventure) and a shorter novel "Melissa," a chilling exploration of ambition.



**Jacklyn A. Lo**

---

## Connect with Me

Website: Explore upcoming releases, new excerpts, beta-reads, and more!

Facebook

Instagram

Youtube

TikTok

